

Town of Mosel Existing Land Use Map



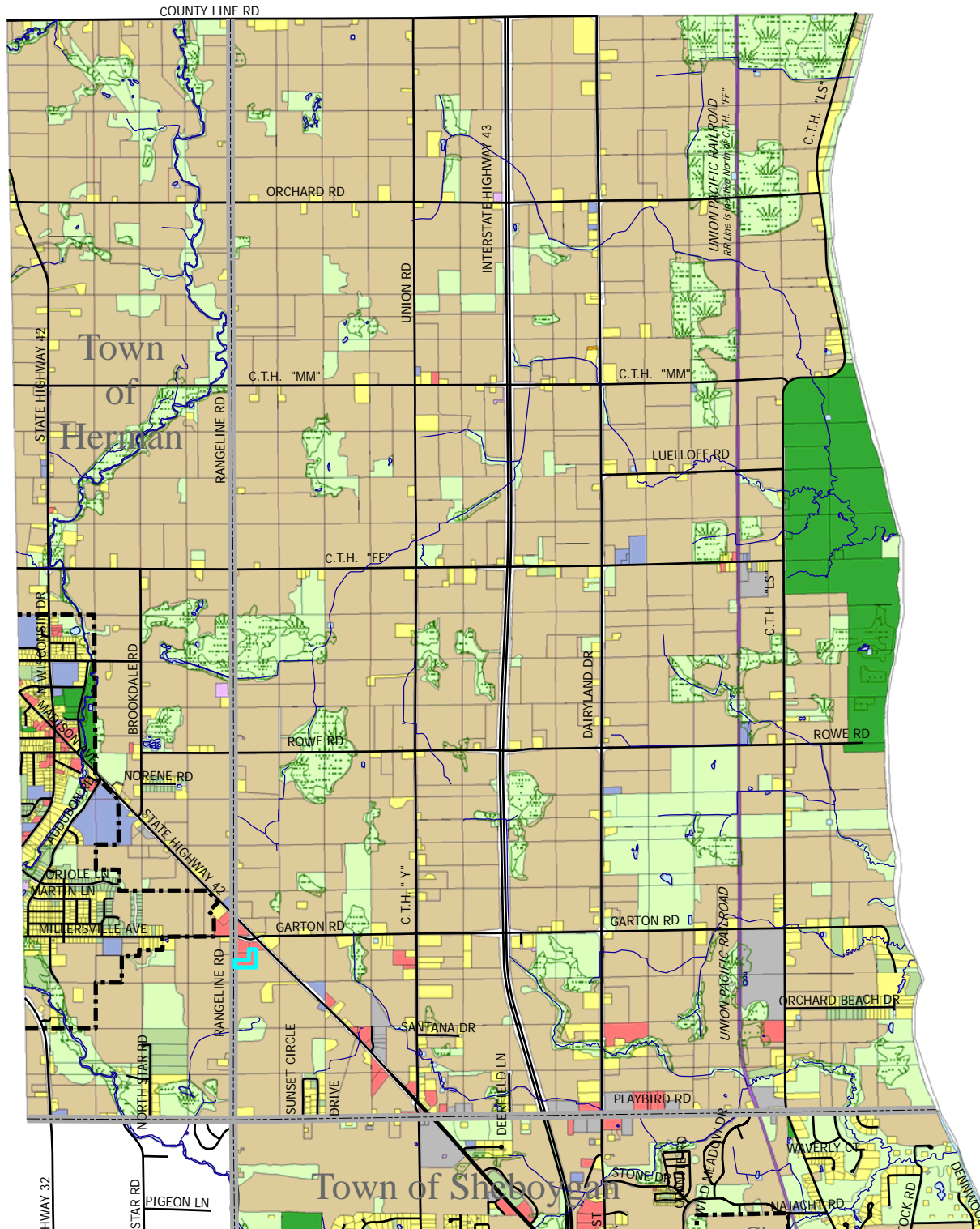
Legend

Land Use Categories

Existing

- Residential
- Mobile Homes
- Commercial
- Industrial
- Transportation
- Communication/Utilities
- Governmental/Institutional
- Parks and Recreation
- Open Space
- Agricultural
- Water Features
- Woodlands/Natural Areas
- WI DNR Wetlands

- Town Limits
- Corporate Limits



The wetland digital data was created from the Wisconsin Wetland Inventory Maps by the DNR Bureau of Watershed Management, who is the custodian and sole distributor of this data.

The base map information was created by Sheboygan County Planning Department and the existing land use information was mapped by Bay-Lake Regional Planning Commission, who expressly disclaim all liability regarding fitness of use of the information and any application by others. Revisions were made by Martenson and Eisele, Inc. under the direction of the Town of Mosel.

Martenson & Eisele, Inc.

1377 Midway Road, Menasha, WI 54952 Planning,
 P (920) 731-0381 F (920) 733-8578 Environmental
 www.martenson-eisele.com Surveying,
 info@martenson-eisele.com Engineering,
 Architecture